

| | |
|---------------------|---|
| Trade Terms | FOB Shenzhen / Guangzhou / Hongkong |
| Production Capacity | 500,000PCS/Month |
| Payment | T/T, PayPal. |
| Delivery Time | 3-7 working days for making sample. 10 to 15 working days for production. |
| Packing | Standard Export Cartons/Custom Cartons |
| Shipping | By sea, By air or by express delivery (DHL/UPS/FEDEX) |
| MOQ | 500PCS |
| Place of Origin | Dongguan, Guangzhou, China |
| Certification | CE,FCC,ROHS,REACH,UKCA |

Product Features:

This RJ12 6P6C Female connector is very easy for soldering as it has 6 pins soldering board for either hands solder or automatic soldering machines to solder the RJ11 telephone cables,

We are the custom Injection RJ11 RJ12 6P6C Female connectors supplier in China, we can provide custom options for our customer, this connector is with shield as well,

We offer also below items for our Network connectors

Soldering type RJ12 6P6C Female connectors

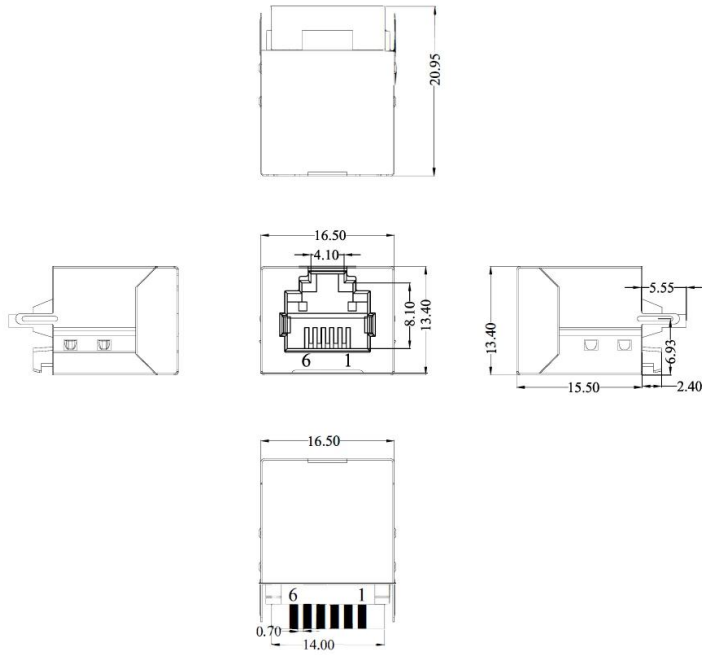
Soldering type RJ45 8P8C Female connectors

Soldering type RJ48 RJ50 10P10C Female connectors

SMT Type Network connectors, For more informations please feel free to contact with our Sales representative

We make also [Injection type RJ50 10P10C Cables](#) by a good price and high quality,

RoHS ^{Pb} Compliant



NOTES

MATERIAL

- 1.HOUSING : PBT UL94V-0
- 2.HOLDER : LCP UL94V-0
- 3.CONTACT : PHOSPHOR BRONZE T=0.3mm.
- 4.PLATING : CONTACT AREA-SELECTIVE GOLD PLATING, TAILS PLATING TIN OVER NICKEL.
- 5.SHIELD : 0.20mm THICKNESS COPPER ALLOY WITH NICKEL PLATED.

ELECTRICAL

- 1.VOLTAGE RATING : 125 VAC RMS.
- 2.CURRENT RATING : 1.5 AMP.
- 3.CONTACT RESISTANCE : 30 MILLIOHMS MAX.
- 4.INSULATION RESISTANCE : 500 MEGOHMS MIN @ 500V DC.
- 5.DIELECTRIC RESISTANCE : 1000V AC RMS 50Hz. 1MIN.

MECHANICAL

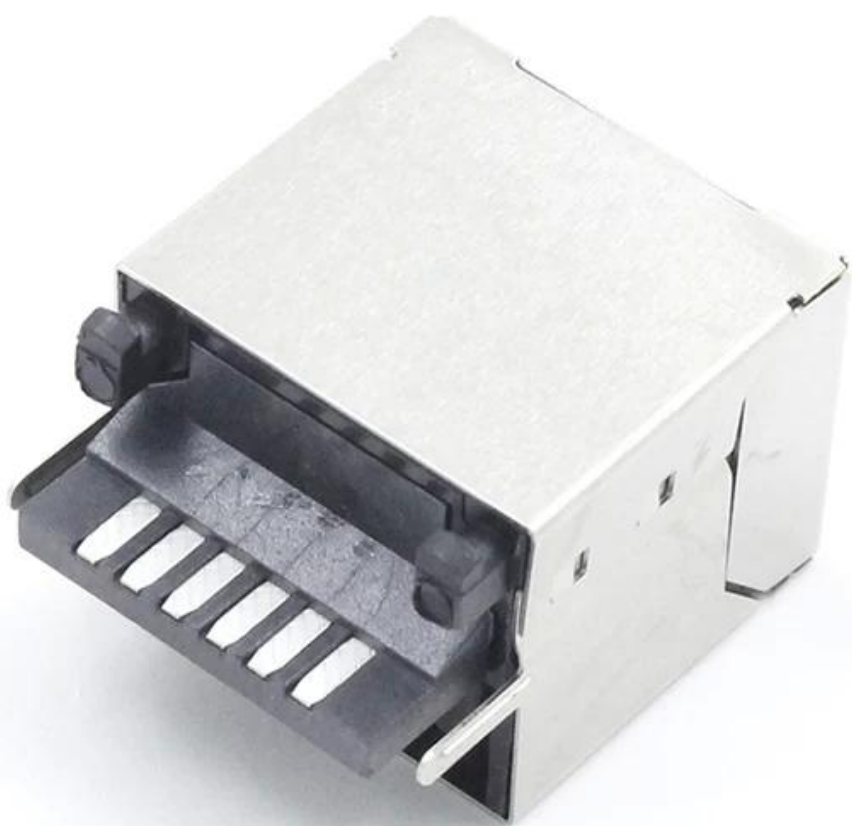
- 1.DURRABILITY : 750 CYCLES MIN.
- 2.PCB RETENTIONPRE-SOLDER : 1 LB MIN.

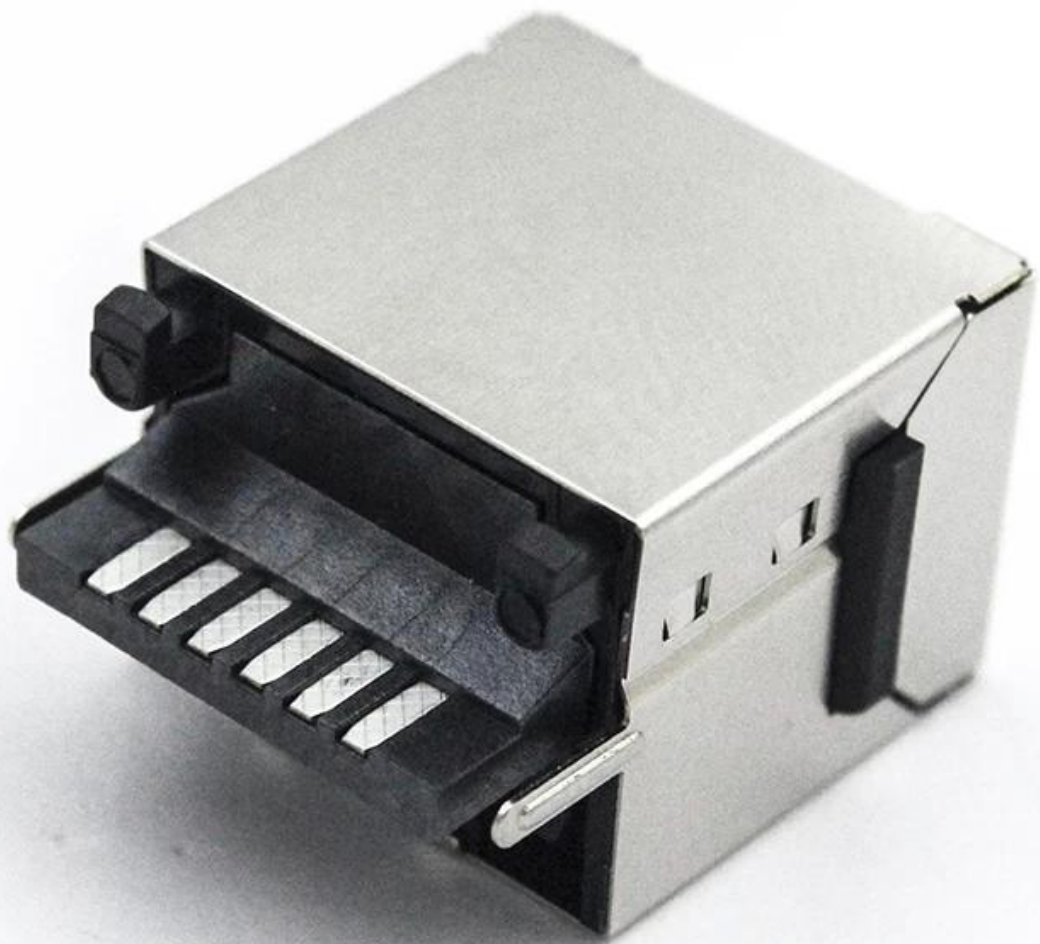
ENVIRONMENTAL:

- 1.STORAGE : -40℃~+85℃.
- 2.OPERATION : -20℃~+70℃.

| 52M 产品系列固定码 | PART NO. | Gold Plating |
|-----------------------|---------------|--------------|
| 5 PIN位码 / 5-6P6C | TM52M511EXX11 | Fu" |
| 11 窗口固定码 / 11-1X1 | TM52M511EXX31 | 3u" |
| EX 外形码 / EX-屏蔽, 无弹 | TM52M511EXX41 | 6u" |
| X LED固定码 / X-无灯 | TM52M511EXX51 | 15u" |
| 1 电镀识别码 / 1-Au G/F u" | TM52M511EXX61 | 30u" |
| 1 系统识别码 | TM52M511EXX71 | 50u" |

| TOLERANCES | | | | | | APPROVAL | | | | TITLE | | | |
|------------|---------|---------|--------------------------------|-------|----------|---------------------|--|--|--|----------------------------------|--|--|--|
| | | | | | | 东莞市谷诚电子科技有限公司 | | | | RJ11 JACK 6P6C 屏蔽无弹 | | | |
| | | | | | | GOOCHAIN TECHNOLOGY | | | | PART NO. TM52M511EXX11 | | | |
| | | | | | | PROJECT | | | | UNIT MM SCALE 1:1 CHECKED REV A4 | | | |
| | | | | | | APPROVAL | | | | DATE 2017/10/13 | | | |
| 171029 | A | B | 料号由TM-52M6611E变更为TM52M511EXX11 | Ethan | Iven | Lucky_qin | | | | | | | |
| DATE | OLD REV | NEW REV | DESCRIPTION | CHECK | APPROVAL | | | | | | | | |









Soldering type Injection RJ12 6P6C Female [Connector](#) [Manufacturer Introduction](#)

Gochain Technology Co.,Ltd is a professional custom cable assemblies manufacturer, manufacturing custom usb cables, Magnetic pogo pin cables manufacturer , Medical ecg cables , PoweredUSB extension Cables, Ethernet cables,Medical plugs and chargers,Wiring harnesses and computer cables , Founded in year of 2015 and we have 2000 square meters custom cable assemblies workshop, around 80 workers, 1 shift is 8 hours per day. We followed international ISO management Standard to make our custom cables, medical cables and chargers with Chinese factory price .



Certificates:

Goochain custom usb cables, Medical cables, computer cables, Pogo pin cables, USB Type c cables, USB Type C connectors, PD Fast chargers, Powered USB extension Cables all has passed the international required certificate so we can export all over the world,



FAQ

Q1: Can I start a sample order first before ordering more?

A: Sure, Goochain provide free samples if we have stock, sample customized should be charged some set up cost. We appreciate you to order sample from us to check our quality.

Q2: What payment methods do you accept?

A: Alibaba Trade Assurance, PayPal, T/T, Bank Transfer, Western Union and L/C

Q3: How does your factory do regarding quality control?

A: Quality is priority. QC department with professional quality assurance specialist attach great importance to quality controlling from the very beginning to the very end. Our factory has gained Rohs, SGS, CE FCC,ISO9001:2008 authentication. Etc

Q4: Factory? Yes! Can I customize items I like, such as to print our own logo, or to alter the design?

A: Yes, we are a factory with more than 100 employees. We offer OEM/ODM service. Please contact us or our sales representative to check with the details.

Q5: Delivery time and warranty? Which shipping service you will use for my goods?

A: Our lead time is around 2-4 weeks, and we can provide 12 months warranty since delivery. We used DHL,Fedex,UPS,TNT,EMS as customer like.

Q6: Where is your factory located? How can I visit there?

A: Sure. We are more than happy to receive you in Dongguan and show you around our workplace. Our factory is located in 3rd. Floor,Building A, No.8 Kangyang 1st Street,Shebei Village,Huangjiang Town,Dongguan City,Guangdong, China.