

□□ □□	FOB □□ / □□□ / □□
□□ □□	500,000 / □
□□	T / T, □□□.
□□ □□	□□□ □□□□□ 3-7 □. □□□□□ 10 ~ 15 □.
□□	□□ □□ □□ / □□□ □□ □□
□□	□□□, □□□□ □□ □□ □□□ (DHL / UPS / FEDEX)
MOQ	500PCS
□□□□	□□, □□□, □□
□□	CE, FCC, RoHS □□, REACH, UKCA

□□ □□:

□ □ □□ □□ □ □□ RJ50 □□□ □□□ □□ □□ sodering □□□ □□ □□□ sodering 10 □ □□□□ RJ50 10P10C □□ □□□□ □□ □□ □□□□□

□□□ □□□ □□□ □□ □□□ □□ □□□ □□ □ □ □□□□, □□□□ □□□ □□ □□ RJ12 RJ45 RJ48 RJ50 □□ □□□ □□ □□□□□. □ □□ □□□ □□□□□□,

□□□ □□□ □□□□ □□□□ □□ □□ □□□ □□

□□ RJ12 6P6C □□ □□□□ Sodering

[□□ □ RJ45 8P8C □□ □□□](#)

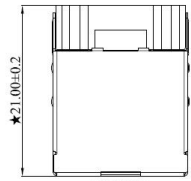
□□ RJ48 RJ50 10P10C □□ □□□□ □□

□ □□ □□□ □□ SMT □□ □□□□ □□□□, □□□ □□ □□□□□ □□ □□□ □□□□

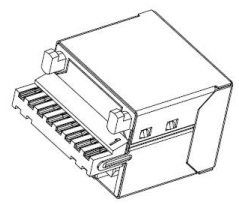
□□□ □□ □□ [□□ □ RJ50 □ 10P10C □□□](#) □□ □□□ □□ □□□,

RoHS+HF (Pb)
Compliant

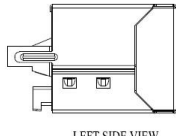
F
E
D
C
B



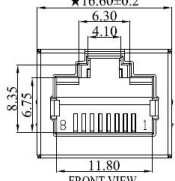
TOP VIEW
★16.60±0.2



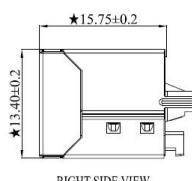
- NOTES
- MECHANICAL:
1. HOUSING MATERIAL: HF PBT BLACK UL94V-0
 2. INSERT MATERIAL: LCP BLACK UL94V-0
 3. CONTACT MATERIAL: PHOSPHOR BRONZE T=0.25mm.
 4. PLATING: GOLD PLATING AT CONTACT AREA, MATTE TIN AT TAIL 100u" MIN, NICKEL 30u" MIN. OVER ALL
 5. SHIELD: BRASS T=0.20mm PLATED NICKEL 30u" Min .
 6. OPERATING LIFE: 750 CYCLES MIN.
 7. MATING/UNMATING FORCE: 30N/3.06KGf MAX
 8. RETENTION STRENGTH: 50N MIN. FOR 60S±5S
- ELECTRICAL:
1. VOLTAGE RATING: 125 VAC RMS.
 2. CURRENT RATING: 1.5 AMP.
 3. CONTACT RESISTANCE : 30mΩ MAX.
 4. INSULATION RESISTANCE: 1000MΩ MIN. AT 500V DC .
 5. DIELECTRIC STRENGTH: 1000V AC OR 1500V DC RMS AT 0.5mA 50Hz/60Hz FOR 1MINUTE.
- ENVIRONMENTAL:
1. STORAGE: -40°C TO +85°C RELATIVE HUMIDITY<80%.
 2. GUARANTEE PERIOD: 12 MONTHS
 3. OPERATION: -40°C TO +85°C.
 4. The mark with ★ is the key inspection dimension for QC



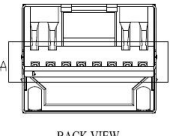
LEFT SIDE VIEW



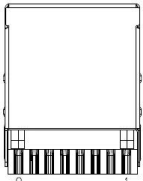
FRONT VIEW



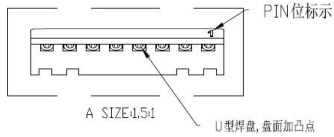
RIGHT SIDE VIEW



BACK VIEW



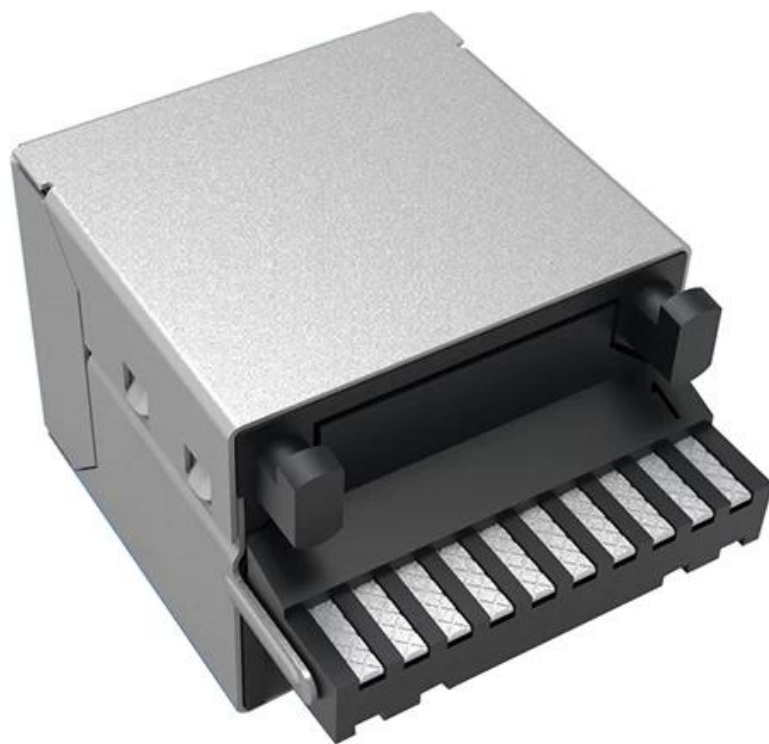
BOTTOM VIEW



A SIZE: 4.5:1

NO.	PACKING	PART NO.	Gold Plating
1	TRAY	TM52W811EX002312113000	1u"
2		TM52W811EX003312113000	3u"
3		TM52W811EX004312113000	6u"
4		TM52W811EX005312113000	15u"
5		TM52W811EX006312113000	30u"
6		TM52W811EX007312113000	50u"





Sodering 10 RJ50 10P10C 10 [10P10C RJ45](#)

Goochain 10 10 10 10 10 usb 10, 10 10 10 10 10 10, 10 10 10 10 10 10, 10 10 10 10 10 10 ECG, USB 10 10 10, 10 10 10, 10 10 10 10, 10 10 10 10 10, 10 10 2015 10 10, 10 80 10 2000 10 10 10 10 10 10 10, 1 10 1 10 8 10. 10 10 10 10 10 10 10, 10 10 10 10 10 10 ISO 10 10 10.

GOOCHAIN

东莞市谷诚电子科技有限公司
DONGGUAN GOOCHAIN TECHNOLOGY CO.,LTD

Welcome To GOOCHAIN



□□□ :

□□□ □□ □□□ □□□ □ □□□ Goochain □□□ □□□ USB □□□, □□ □□□, □□□ □□□, □□ □ □□□, USB □□ C □□□, USB □□ C □□□, PD □□ □□□, USB □□ □□ □□□□ □□ □□ □□□□ □□□□



□□□□ □□

Q1 : □ □ □ □□□□ □ □ □ □ □□ □□?

A : □□□ □□□ □□□□□ □ □□ Gochain □□ □□□ □□, □□□ □□ □□ □□□□ □ □□□ □□□□□□□□. □□□ □□□ □□□ □□□ □□ □□□ □□ □□□ □□□ □□□□□.

Q2 : □□ □□ □□ □□ □□□□□?

A : □□□□ □□ □□, □□□, T / T, □□ □□, □□□ □□□ □ L / C

Q3 : □□□ □□ □□ □□□ □□□□□?

A : □□ □□ □□□□□□. □□□□ □□ □□ □□□□ □□ □□ □□□ □□ □□ □□□ □□□□ □□□□ □□□□□. 2008 □□ : □□ □□□ RoHS □□, SGS, CE, FCC, ISO9001□ □□□□□. □

Q4 : □□? □! □□ □□ □□□ □□□ □□□□□, □□ □□□□ □□□□ □□ □□ □□□□ □□ □□ □□□□□?

□□ : □, □□□ 100 □ □□□ □□□ □□□□□. □□□ OEM / ODM □□□□ □□□□□□. □□ □□ □□ □□□ □□ □□ □□□□□ □□□□.

Q5 : □□ □□ □ □□? □□□ □□ □□□ □ □□□ □□□?

A : □□□ □□ □□□ □ 2~4□□□, □□□ □□ □□ 12 □□ □□□ □□ □ □ □□□□. □□□ □□ □□□□ DHL, □□□, UPS, TNT, EMS□ □□□□.

Q6 : □□ □□□ □□ □□□ □□□□? □□□□ □□ □ □ □□□□?

A : □□. □□□ □ □□ □□ □□ □□ □□□ □□□ □□□□ □□□□. □□ □□□ 3□ □□□□ □□□□□. □, □□ A, 8 □ Kangyang 1 □□, Shebei □□, Huangjiang □□, □□□, □□□, □□.