

Trade Terms	FOB Shenzhen / Guangzhou / Hongkong
Production Capacity	500,000PCS/Month
Payment	T/T, PayPal.
Delivery Time	3-7 working days for making sample. 10 to 15 working days for production.
Packing	Standard Export Cartons/Custom Cartons
Shipping	By sea, By air or by express delivery (DHL/UPS/FEDEX)
MOQ	500PCS
Place of Origin	Dongguan, Guangzhou, China
Certification	CE,FCC,ROHS,REACH,UKCA

Product Features:

This RJ45 8P8C Female connector is very easy for soldering as it has 8 pins soldering board for either hands solder or automatic soldering machines to solder the RJ45 ethernet cables,

We are the custom Injection RJ45 RJ50 Female connectors supplier in China, we can provide custom options for our customer, this connector is with shield as well,

We offer also below items for our Network connectors

Soldering type RJ12 6P6C Female connectors

Soldering type RJ45 8P8C Female connectors

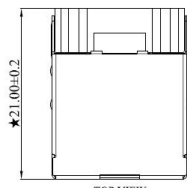
Soldering type RJ48 RJ50 10P10C Female connectors

SMT Type Network connectors, For more informations please feel free to contact with our Sales representative

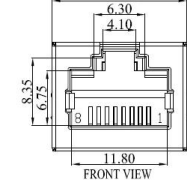
We make also [Injection type RJ50 10P10C Cables](#) by a good price and high quality,

RoHS+HF (Pb)
Compliant

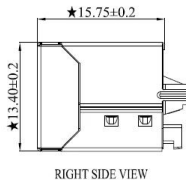
F
E
D
C
B



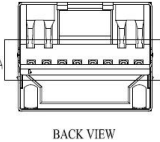
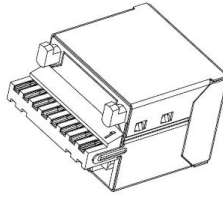
TOP VIEW



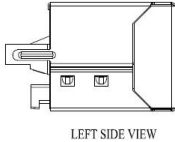
FRONT VIEW



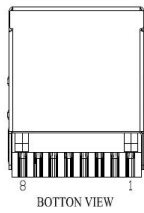
RIGHT SIDE VIEW



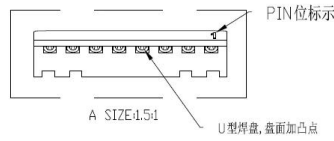
BACK VIEW



LEFT SIDE VIEW



BOTTOM VIEW



A SIZE:4.5:1

U型焊盘, 背面加凸点

NOTES

MECHANICAL:

1. HOUSING MATERIAL: HF PBT BLACK UL94V-0
2. INSERT MATERIAL: LCP BLACK UL94V-0
3. CONTACT MATERIAL: PHOSPHOR BRONZE T=0.25mm.
4. PLATING: GOLD PLATING AT CONTACT AREA, MATTE TIN AT TAIL 100u" MIN, NICKEL 30u" MIN. OVER ALL
5. SHIELD: BRASS T=0.20mm PLATED NICKEL 30u" Min .
6. OPERATING LIFE: 750 CYCLES MIN.
7. MATING/UNMATING FORCE: 30N/3.06KGf MAX
8. RETENTION STRENGTH: 50N MIN. FOR 60S±5S

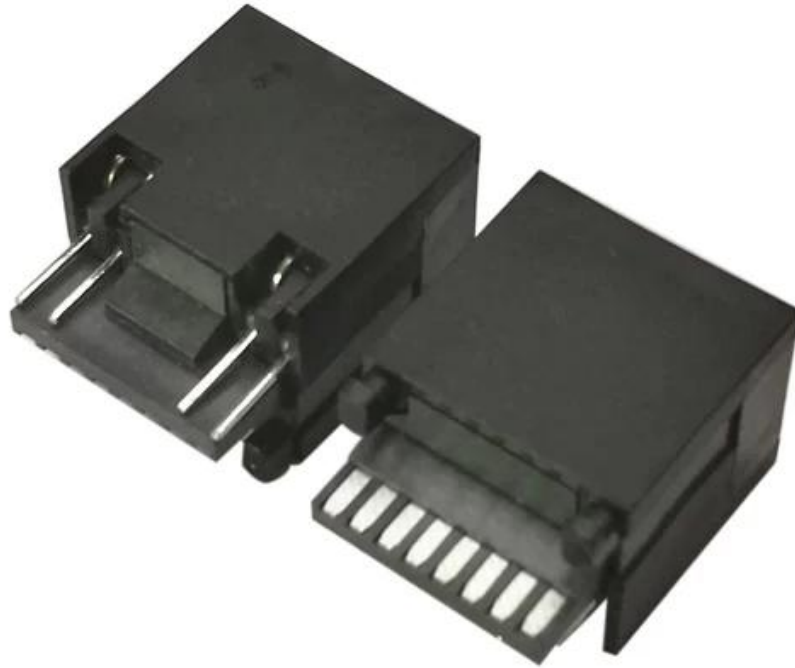
ELECTRICAL:

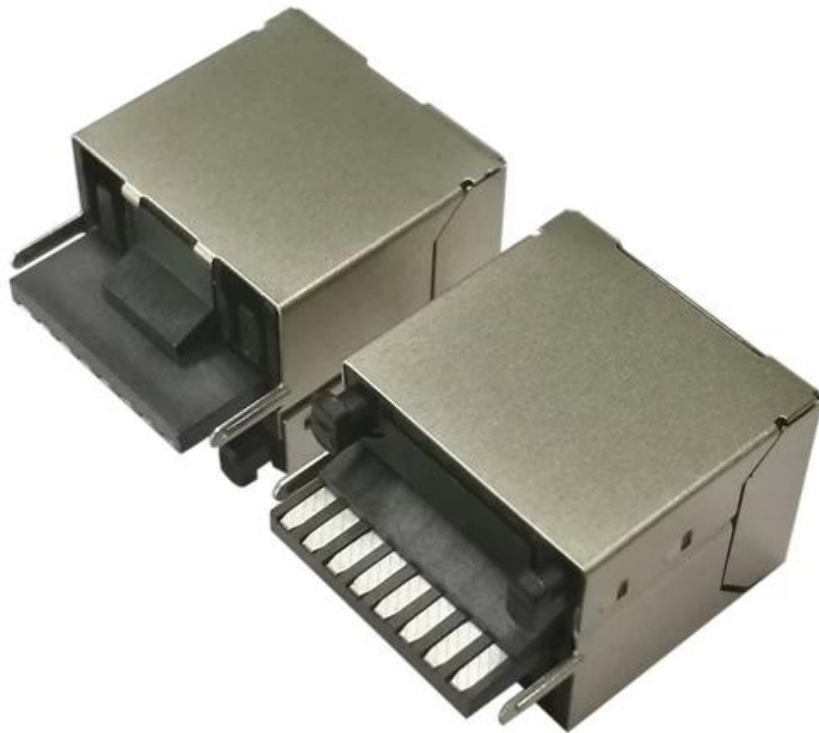
1. VOLTAGE RATING: 125 VAC RMS.
2. CURRENT RATING: 1.5 AMP.
3. CONTACT RESISTANCE : 30mΩ MAX.
4. INSULATION RESISTANCE: 1000MΩ MIN. AT 500V DC .
5. DIELECTRIC STRENGTH: 1000V AC OR 1500V DC RMS AT 0.5mA 50Hz/60Hz FOR 1MINUTE.

ENVIRONMENTAL:

1. STORAGE: -40°C TO +85°C RELATIVE HUMIDITY<80%.
2. GUARANTEE PERIOD: 12 MONTHS
3. OPERATION: -40°C TO +85°C.
4. The mark with ★ is the key inspection dimension for QC

NO.	PACKING	PART NO.	Gold Plating
1	TRAY 100PCS/盒 2000PCS/箱 纸箱尺寸: 394*275*500MM	TM52W811EX002312113000	1u"
2		TM52W811EX003312113000	3u"
3		TM52W811EX004312113000	6u"
4		TM52W811EX005312113000	15u"
5		TM52W811EX006312113000	30u"
6		TM52W811EX007312113000	50u"





支架LCP材料耐高温

Sodering type Injection RJ45 8P8C Female [Connector](#) [Manufacturer Introduction](#)

Gochain Technology Co.,Ltd is a professional custom cable assemblies manufacturer, manufacturing custom usb cables, Magnetic pogo pin cables manufacturer , Medical ecg cables , PoweredUSB extension Cables, Ethernet cables,Medical plugs and chargers,Wiring harnesses and computer cables , Founded in year of 2015 and we have 2000 square meters custom cable assemblies workshop, around 80 workers, 1 shift is 8 hours per day. We followed international ISO management Standard to make our custom cables,

medical cables and chargers with Chinese factory price .



Certificates:

Goochain custom usb cables, Medical cables, computer cables, Pogo pin cables, USB Type c cables, USB Type C connectors, PD Fast chargers , Powered USB extension Cables all has passed the international required certificate so we can export all over the world,



FAQ

Q1: Can I start a sample order first before ordering more?

A: Sure, Goochain provide free samples if we have stock, sample customized should be charged some set up cost. We appreciate you to order sample from us to check our quality.

Q2: What payment methods do you accept?

A: Alibaba Trade Assurance, PayPal, T/T, Bank Transfer, Western Union and L/C

Q3: How does your factory do regarding quality control?

A: Quality is priority. QC department with professional quality assurance specialist attach great importance to quality controlling from the very beginning to the very end. Our factory has gained Rohs, SGS, CE FCC,ISO9001:2008 authentication. Etc

Q4: Factory? Yes! Can I customize items I like, such as to print our own logo, or to alter the design?

A: Yes, we are a factory with more than 100 employees. We offer OEM/ODM service. Please contact us or our sales representative to check with the details.

Q5: Delivery time and warranty? Which shipping service you will use for my goods?

A: Our lead time is around 2-4 weeks, and we can provide 12 months warranty since delivery. We used DHL,Fedex,UPS,TNT,EMS as customer like.

Q6: Where is your factory located? How can I visit there?

A: Sure. We are more than happy to receive you in Dongguan and show you around our workplace. Our factory is located in 3rd. Floor,Building A, No.8 Kangyang 1st Street,Shebei Village,Huangjiang Town,Dongguan City,Guangdong, China.